

## "Take Intelligent Control of Your Solar Hot Water System"



**SolaStat Range of Solar Energy Products** are an advanced generation of controllers, pumps, software and accessories, providing a dependable solution to your Solar Water-Heating needs. The SolaStat Controllers are visually appealing and are easy to install, use and programme.

**SolaStat Controllers Include Advanced Functions** of differential control, frost protection, topout, sensor diagnostics, smart shutdown, comprehensive status displays with the options of pump timer for pump cavitation recovery, digital temperature display, remote displays, datalogging and saving power by taking full intelligent control of the HWC electric element.

### SolaStat Solar Hot Water Controllers.

#### SolaStat-Plus

- The SolaStat-Plus-2 saves power;
  - It takes full control of the HWC element.
- Large Soft Green Digital LED Display c/w 8 Status Lights.
- 3 Sensors for Maximum Functionality and Efficient Control
- Installer Adjustable Setpoints.



The SolaStat-Plus measures water temperature at three different places in the system and turns on a water pump at the optimum time. The pump moves hot water from the solar collector into the hot water tank.

The SolaStat-Plus-1 (Single Relay) includes: Digital Display, 8 status Lights, 2m Inlet Sensor, 2m Tank Sensor, 10m Roof Sensor, 1 x 1HP Relay, Pump Timer On, 2m Mains Cable and Pump Outlet.

The SolaStat-Plus-2 (Dual Relay) includes: Digital Display, 8 status Lights, 2m Inlet Sensor, 2m Tank Sensor, 10m Roof Sensor, 2 x 1HP Relay, Pump Timer On, 2m Mains Cable, Pump Outlet, and HWC Outlet.

#### AlphaStat-Plus HWC Electric Element Controller.

- Automatic Electric Element Control, Saves Power, Saves Money
- Large Soft Green Display of Tank Temperature
- User Adjustable Water Temperature Settings
- Biosafe Function for Legionella Protection

AlphaStat-Plus is an advanced HWC electric element controller that automatically saves electricity. It is suitable for Solar Thermosiphon, Wetback, or Electric HWC installation.

The AlphaStat-Plus standard model includes: Digital Display, 8 Status Lights, 10m Tank Sensor, 1 x 16A Relay, 2m Mains Cable and HWC Outlet.



## SolaStat Solar Hot Water Controllers, Continued.

### SolaStat-Eco

- **Most cost effective model.**
- **Status Lights.**
- **Installer Selectable Setpoints.**



The SolaStat-Eco measures water temperatures at two different places in the system and turns on a water pump at the optimum time. The pump moves hot water from the solar collector into the hot water tank.

The SolaStat-Eco standard model includes: 4 status Lights, 2m Inlet Sensor, 10m Roof Sensor, 1 x 1HP Relay, Pump Timer On, 2m Mains Cable and Pump Outlet.

The SolaStat-Eco-P Pool model includes; 4 status Lights, 2m Inlet Sensor, 10m Roof Sensor, 1 x 2HP Relay, Pump Timer Off, 2m Mains Cable, Pump Outlet and Water Resistant Enclosure.

### SolaStat-Rmt

- **Remote Display for SolaStat-Plus or SolaStat-Pool.**
- **Large 20mm Soft Green Digital LED Display c/w 8 Status Lights.**
- **Can be remotely installed up to 1200m with RS485 Comms.**

The SolaStat-Rmt is a remote display for SolaStat-Plus or SolaStat-Pool. It can be remotely installed up to 1200m with RS485 Comms.

The SolaStat-Rmt standard model Includes, Digital Display, 8 status Lights, RS485 Comms: SP-Comms-485 board, CA-485-50 Cable (50m)



### SolaStat-Pool

- **User Adjustable Pool Comfort Temperature.**
- **2HP Pump Control.**
- **Tropical Mode.**



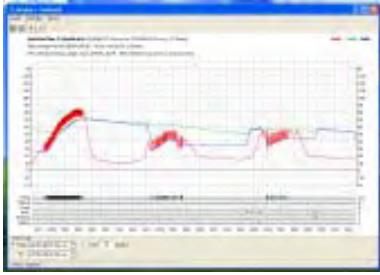
The SolaStat-Pool measures water temperatures at two different places in the system and turns on a water pump at the optimum time. The pump moves warm water from the solar collector into the swimming pool.

The SolaStat-Pool standard model includes: Digital Display, 8 status Lights, 2m Pool Sensor, 10m Roof Sensor, 1 x 2HP Relay, 2m Mains Cable, Pump Outlet and Water Resistant Enclosure.

The SolaStat-Pool Tropical Mode option uses the Solar Collectors to cool the pool at night.

## SolaStat SolaData Hardware and Software.

### SolaData



The SolaData Software and Hardware gives a complete solution to PC Datalogging and are used with the SolaStat-Plus or SolaStat-Pool. The SolaData Records all SolaStat Controller functions with Graphs and Indicators and does energy calculations.

The SolaData can be used to help people in trouble shooting systems, checking system operation, improving energy efficiency, looking at annual cycles and peaks and analyze approximate cost savings.

SolaData is compatible with RS232 (short distance) or RS485 (long distance) hardware interfaces (as well as USB via a converter) and computers running Microsoft Windows® 98 or later software.

## SolaStat Accessories.

### SolaStat-Rly

- Slave Relay for HWC Electric Element Control.
- Slave Relay for Large Pump Systems.
- Slave Relay for Isolation to Low Voltage Systems.
- SolaStat-Rly Fully Isolates the SolaStat Controller from the Load.

The SolaStat-Rly is a slave relay that can be used in conjunction with the SolaStat-Plus-2 (Dual Relay) and AlphaStat-Plus to take full control of the HWC for greater efficiency and energy savings.



### T10K SolaStat Temperature Sensors.

The SolaStat T10K Temperature Sensors are a range of thermistor based temperature probes for any of the SolaStat range of Hot Water Controllers. The sensors are housed in sealed stainless steel probes, complete with different length leads, for direct connection to any of the SolaStat. The SolaStat T10K Temperature Sensors are UV resistant. They are interchangeable with no recalibration required.

### SolaStat RS232 to USB Converter.

DB9 Serial to USB adapter that enables the SolaStat-Plus or SolaStat-Pool, to communicate to the USB port on a PC.

### SolaStat RS232 D to RJ12 Socket.

The 9 Pin D Connector to connect the RS232 cable to the PC RS232 Comms Port.



## Basic SolaStat-Plus-2 Installation.

